

PARTS LIST

LOW-PROFILE & SEMI-PORTABLE DOCK LIFT



ACTUAL PRODUCT MAY NOT APPEAR EXACTLY AS SHOWN

WARNING

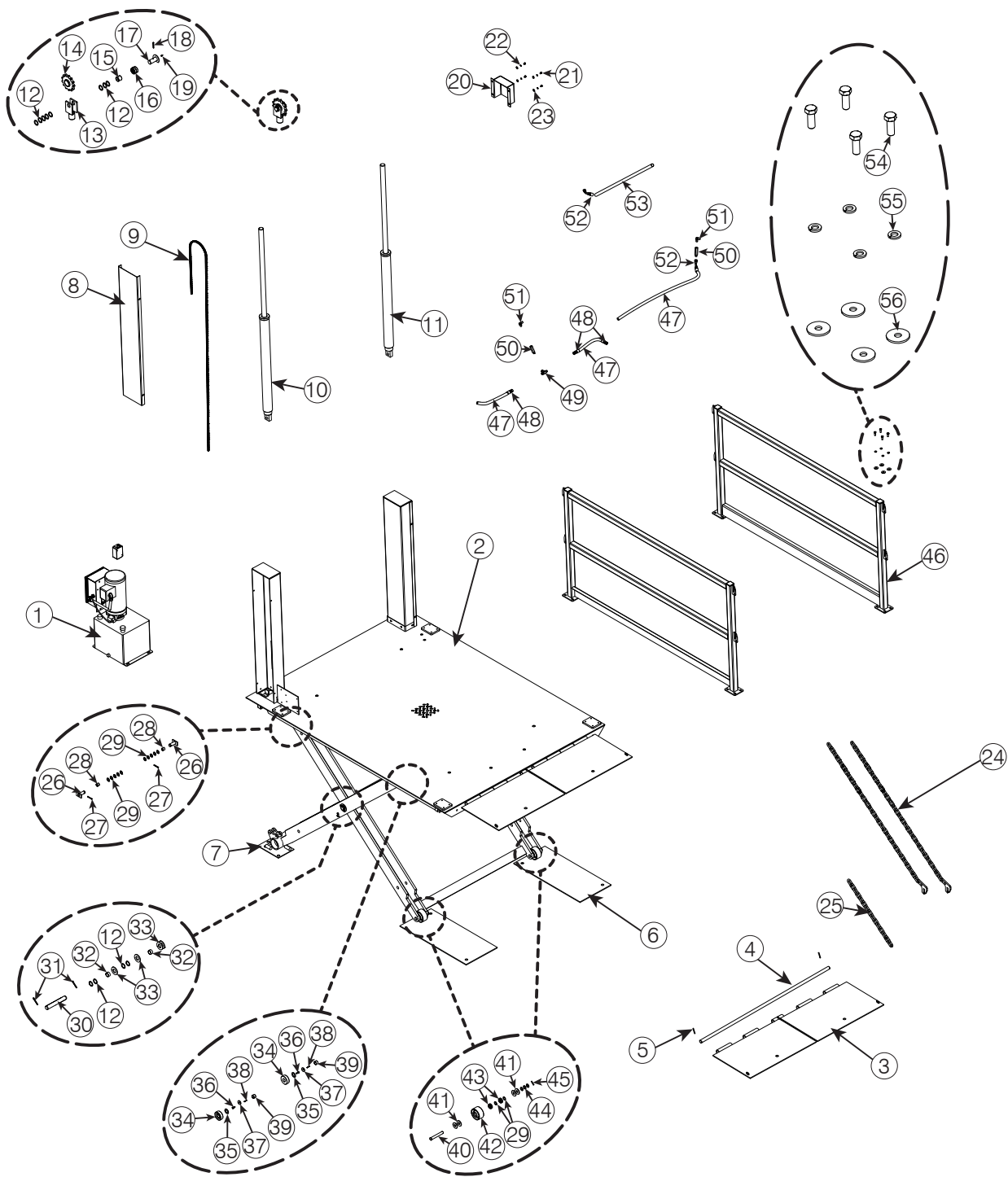
Do not operate or service this product unless you have read and fully understand the entire contents of this manual. Failure to do so may result in bodily injury or death.

BLUE GIANT®

STARTING FROM JANUARY 28, 2025 / SERIAL # 0.

ISSUE DATE: MARCH 27, 2025 REV. 1.0 (PART # 038-589EPL)

MECHANICAL ASSEMBLY



MECHANICAL ASSEMBLY CONT'D.

ITEM	QTY	PART NO.	DESCRIPTION
1	1	Varies on Model	HYDRAULIC POWERPACK
2	1	Varies on Model	DECK WELD
3	1	Varies on Model	LIP PLATE WELDMENT
4	1	Varies on Model	LIP HINGE TUBE
5	1	013-625	LIP PIN
6	2	105-487	WEAR PLATE 32in X 14in X 1/4in THK
7	2	796-926	CRADLE PLATE 7"X 10"X 3/16" ED/SP
8	2	103-806	CYLINDER POST COVER
9	2	090-051	CHAIN #35, McMASTER # 7210K125
10	1	786-720	CYLINDER ASSY (LEFT) 4-5# 2-1/2" DIA X 29.919 STROKE
11	1	786-721	CYLINDER ASSY (RIGHT) 4-5# 2-1/2" DIA X 29.919 STROKE
12	24	105-882	WASHER, FLAT 1-5/16in ID X 1-3/4in OD X 1/16in THK
13	2	797-504	BRACKET (4X3X3/8)
14	2	105-645-1	SPROCKET RAMTOP ASSEMBLY - MODIFIED
15	2	018-649	SHAFT LINER, 1-1/4ID X 1-1/2OD X 1-1/4W
16	2	018-650	NEEDLE ROLLER BEARING, 1-1/2 SHAFT, 1-1/4W
17	2	797-451-1	PIN CROSS HEAD 1-1/4"OD X 3L, GREASE
18	2	013-012	SPRING PIN Ø1/4" X 2"L ZN PLATED
19	2	019-500	NIPPLE STRAIGHT GREASE 1/4"
20	1	801-798	COVER, 8 3/4in L X 7in W X 3in H
21	4	010-148	SCREW,CAP,HEX HD,1/4-20x0.375X0.375,-,NP
22	4	012-202	WASHER,LOCK,SPG,REGULAR,1/4,PREFERRED

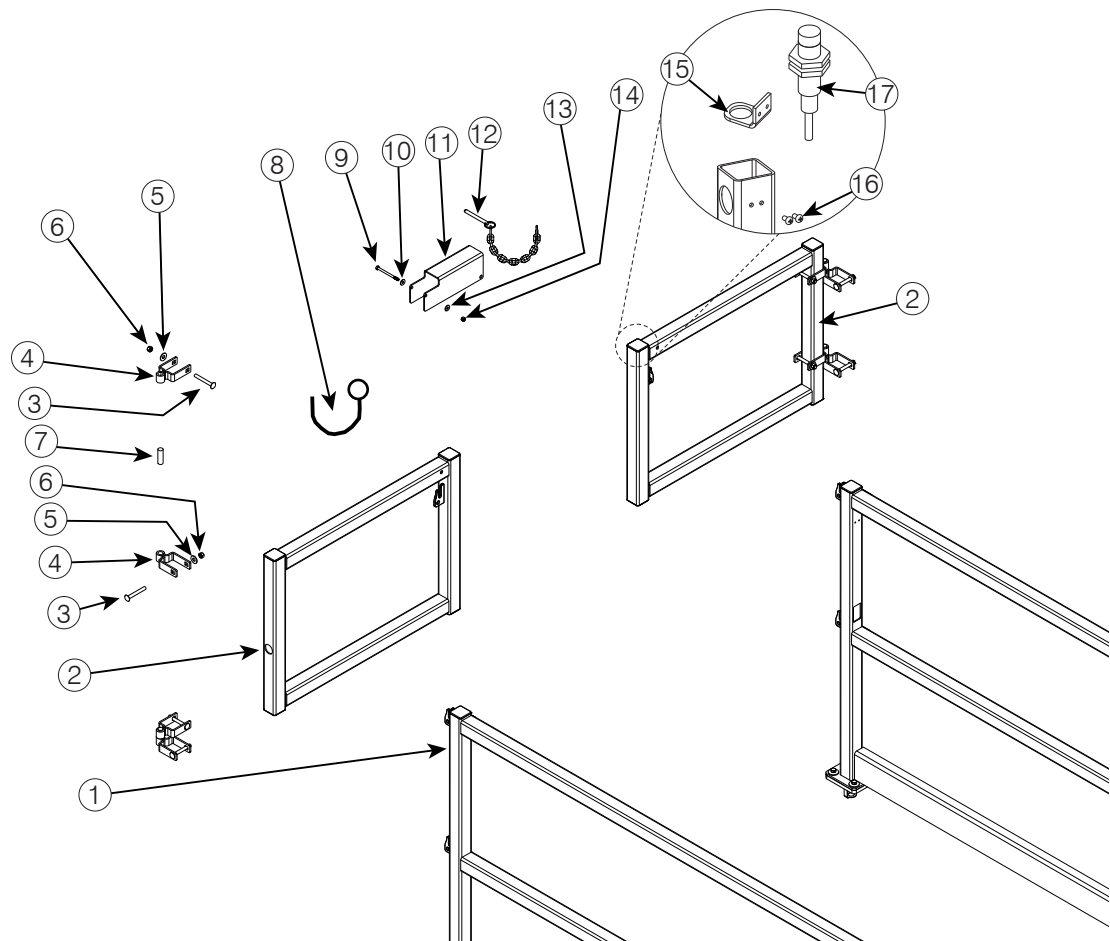
LOW-PROFILE & SEMI-PORTABLE DOCK LIFT—PARTS LIST

ITEM	QTY	PART NO.	DESCRIPTION
23	4	012-210	WASHER,FLAT,ZN PLD,1/4,PREFERRED
24	Varies on Model	Varies on Model	LIP CHAIN
25	Varies on Model	Varies on Model	PERSONNEL RESTRAINT CHAIN(S)
26	4	797-445	FLANGE PIN ASSY 2" X 1-3/16" X 7GA
27	4	013-012	PIN,SPRING,SLOTTED,1/4X2,PREFERRED
28	4	018-001	BUSHING 3/4"ID X 7/8"OD X 3/4"L
29	20	105-879	WASHER,SHIM,3/4X1 3/16X1/16,NP
30	2	103-935	CENTER PIN 1-1/4in OD X 8-5/8in L
31	4	013-082	PIN,COTTER,1/4X2,PREFERRED
32	4	018-025	BUSHING FIBERGLIDE 1-1/4"ID X 1-13/32"OD X 3/4"L - CJS-2012
33	8	012-216	WASHER, FLAT 1-5/16in ID X 2-3/4in OD X 5/32in THK
34	4	105-225	SCISSOR ROLLER 3"OD X 1"W
35	4	106-389	"WASHER, SPACER,1 ID X 1-3/4 OD X 1/16 THK"
36	4	010-037	HHCS 5/16-18 UNC X 3/4" GR5
37	4	107-038	WASHER ROLLER 11/32"ID X 1-3/8"OD X 3/16"THK
38	4	013-005	SPRING PIN, 5/32in OD X 1in L
39	4	018-051	BUSHING FIBERGLIDE 1"ID X 1-1/8"OD X 3/4"L
40	2	106-170	AXLE, LOAD ROLLER 3/4in OD X 5-1/4in L
41	8	012-214	WASHER 3/4DIAx2ODx9/64THK
42	2	100-103	4in OD LOAD WHEEL
43	4	018-500	BALL BEARING 3/4"ID X 1-5/8"OD X 7/16"
44	6	105-880	WASHER SPACER 1-3/16" OD X 3/4" ID X 1/8"THK
45	2	013-011	SPRING PIN 1/4in DIA X 1-3/8in L
46	Varies on Order	Varies on Model	GUARD RAIL

ITEM	QTY	PART NO.	DESCRIPTION
47	3	090-838-0120	HOSE, #6 HIGH PRESSURE
48	3	034-636	SAE 37 DEG STRAIGHT SWIVEL
49	1	034-579	FITTING,TEE,JIC,MALE UNION,06-06-08
50	2	033-663	VELOCITY FUSE 7.5 GPM
51	2	034-599	FITTING 90 6MP-4MP
52	2	034-706	FITTING
53	1	090-385	EMT, CONDUIT, 3/4X37
54	16	010-039	HFBOLT 0.375-16x1x1-N
54	16	012-201	WASHER,LOCK,SPG,REGULAR,3/8,PREFERRED
56	16	012-252	WASHER,FLAT,3/8X1 1/4X1/10,PREFERRED

GATE MECHANICAL ASSEMBLY

This exploded view displays common components of the dock lift.

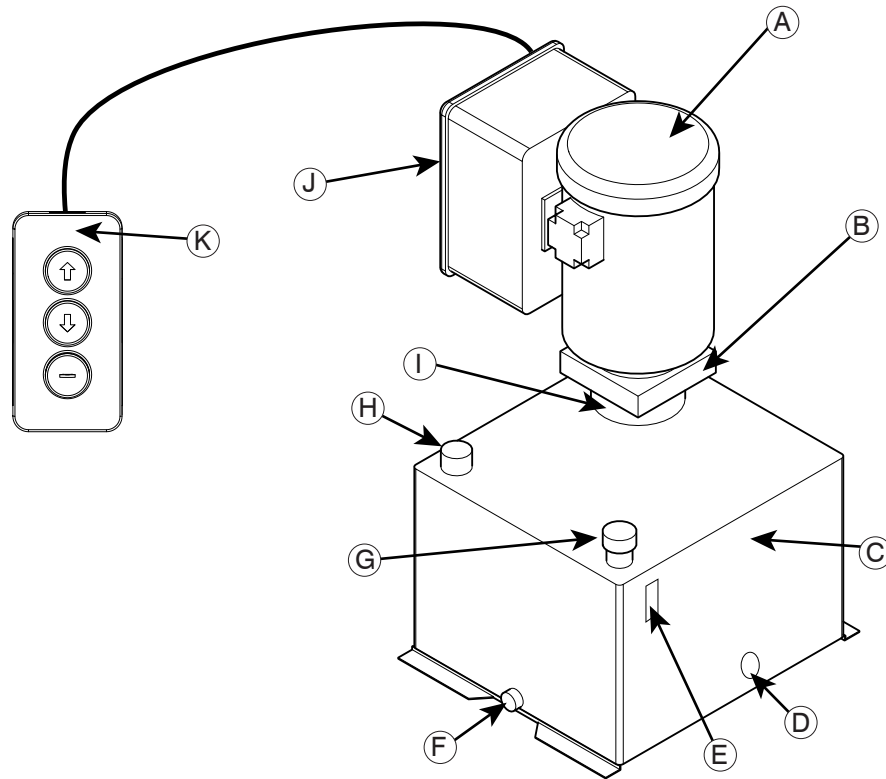


ITEM	QTY	PART NO.	DESCRIPTION
1	Varies on Model	2002783	GUARD RAIL
2	2	Varies on Model	GATE
3	8	014-075	BOLT,CARRIAGE,3/8-16X3,NP
4	4	2005978	BRACKET, SQ. POST 2IN, FEMALE, 9GA
5	16	012-252	WASHER,FLAT,3/8,PREFERRED
6	8	011-507	NUT,HEX,3/8-16,PREFERRED
7	4	2012452	PIVOT PIN 5/8"D X 2"L
8	1	013-632	LANYARD, LOOP TO LOOP 12L
9	1	011-141	CAPSCREW, HEX HEAD, ZINC PLATE
10	2	012-210	WASHER,FLAT,ZN PLD,1/4,PREFERRED
11	1	2005997-03	LATCH, LOOP OVER GATE
12	1	013-605	PIN
13	2	012-210	WASHER,FLAT,ZN PLD,1/4,PREFERRED
14	1	011-545	NUT,HEX,NYLON,LOCK,1/4-20,PREFERRED
15	1	2017380	BRACKET, GATE SENSOR (Option)
16	2	011-027	SCREW, MACHINE P/H, ZP (Option)
17	1	028-207-1	PROXIMITY SENSOR, M18, 2-WIRE, M12 (Option)

POWERPACK IDENTIFICATION

The assembly and parts of the Powerpack (Pit or Remote) are listed below for easy reference.

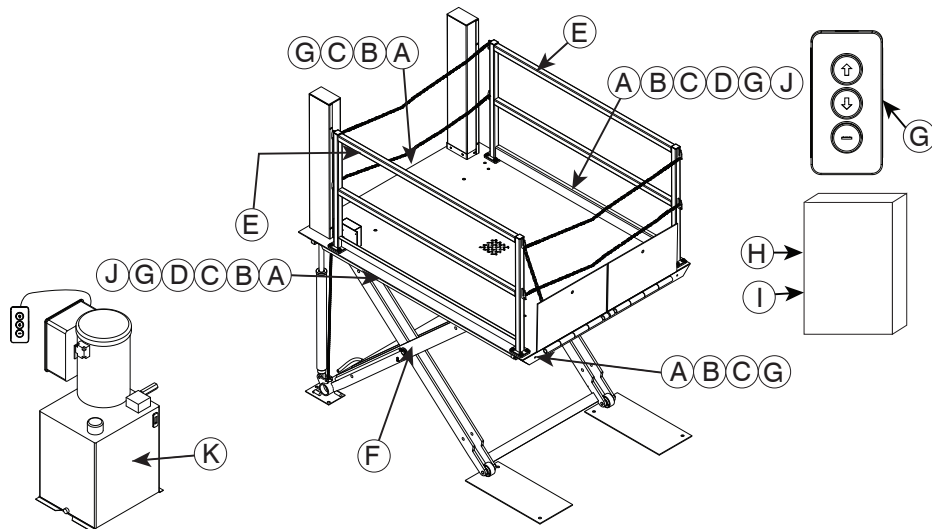
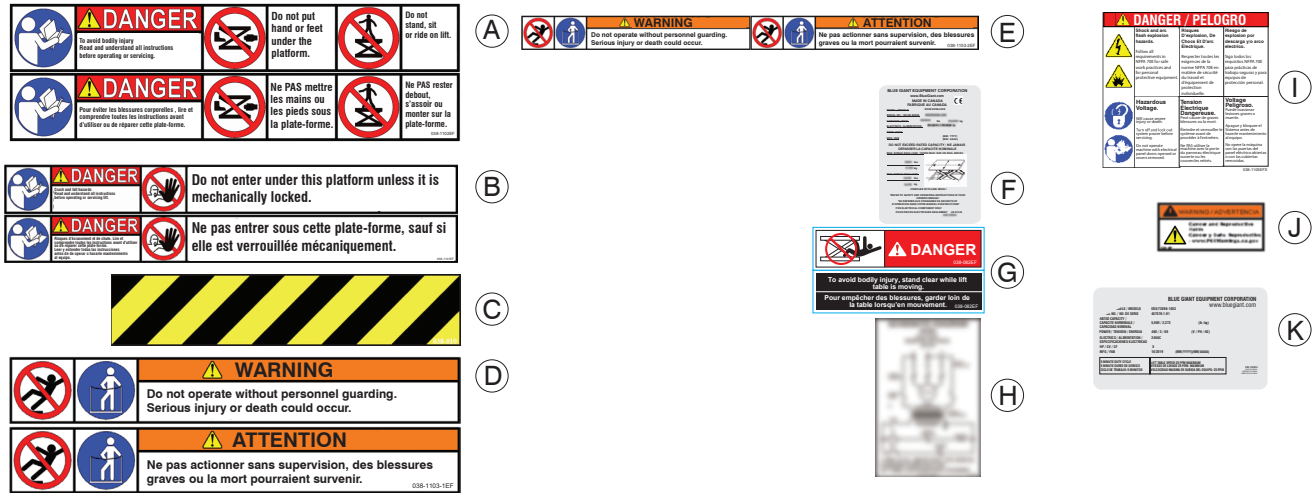
Refer to the electrical drawings for specific wiring requirements



ITEM	QTY	DESCRIPTION
	1	Powerpack 3 HP
	1	Powerpack 5 HP
	1	Powerpack 7.5 HP
	1	Powerpack 10 HP
A	1	Motor
B	1	Manifold
C	1	Tank/Reservoir
D	1	Heater Port
E	1	Sight Glass Oil Level (Optional)
F	1	Drain
G	1	Tank/Reservoir Filler Breather
H	1	Filler / Vent Hole
I	1	Pump (not shown)
J	1	Control Box
K	1	Push Button Control Pendant

DECAL IDENTIFICATION AND LOCATION

These labels inform operators and personnel about hazardous areas on and around the dock lift.



Callout	Qty	Part No.	Description
A	4	038-1102	EF Warns personnel to read operating instructions before using the dock lift and warn of possible bodily injury
			ES
B	4	038-1101	EF Warns personnel to employ the Service Stand before working on and under the lift table
			ES
C	4	038-237	Safety Stripe tape to alert personnel of hazardous areas and edges (i.e. toe guards, edges)
D	2	038-1103	1EF Warns personnel to use the original guard rails and other safety features when operating the lift. (i.e. Interlock gate)
			1ES (Located on the deck sides)
E	1 per guardrail	038-1103	2EF Warns personnel to use the original guard rails and other safety features when operating the lift. (i.e. Interlock gate)
			2ES (Located on the original guard rails)
F	2	038-1106EFS	Nameplate to identify the dock lift, serial number, and load transfer capacities
G	5	038-082	EF Warns personnel to stand clear of dock lift and the immediate area while it is in operation. Each decal has an image half and a text half. Each half may be applied horizontally (side to side) along the table edge or vertically (one above another) along the table edge, depending on space available.
			ES
H	1	114-308	Wiring diagram for facility hookup (Keep in electrical box) (Sample only shown)

Callout	Qty	Part No.	Description
I	1	038-1105EFS	Reminds personnel to lock out the electrical feeds before attempting work on the lift (on exterior of electrical box)
J	2	038-1097ES	Proposition 65 Cancer and Reproductive Harm Warning - California only
K	1	038-1107EFS	Rated dock capacity and electrics (Located on Powerpack)

OPERATION PLACARD

The Operation Placard (Part. No. 038-545E) is to be wall mounted near the dock lift controls. A duplicate is provided on the following page.



WARNING

APPLIES TO BLUE GIANT SCISSOR LIFTS

Do not operate this scissor lift without proper training and authorization.

READ AND UNDERSTAND THE FOLLOWING:

*The instructions and warnings on this placard and in the owner's manual.
The warnings on the scissor lift decals.*

Do NOT go under the scissor lift platform to clean or perform routine maintenance unless the Maintenance Strut and Service Stand are safely and securely engaged.

Prior to using the scissor lift:

- *Verify that all safety devices (guard rails, restraint chains, toe guards, and warning bells-if equipped) are in place and functioning properly.*
- *Operate the scissor lift through one complete lift / lower cycle and verify its proper operation. Inspect the scissor lift for signs of structural damage or mechanical malfunction. If damage is observed or the unit fails to operate properly, remove them from service and notify maintenance personnel immediately.*

Do NOT exceed the capacity as stated on the nameplate.

Ensure that the scissor lift serial nameplate is present and legible.

Do NOT leave the control station where it can be accidentally operated or damaged.

Be aware that lift capacity may be reduced when loads are rolled over the platform sides or edges. Refer to the nameplate for reduced capacity under these conditions.

If loads are mobile, secure them in a fixed position before operating the scissor lift.

Lift operator(s) must be present during all steps of operation.

Lift operator(s) must keep an unobstructed view of lift, any operation light/horn/bell, and other operators to ensure safe operation.

Ensure that all personnel near the scissor lift are aware that it is being operated.

Keep objects, control cables, spills, possible trip hazards, and debris away from around or under the scissor lift platform/lip and its travel path.

If the scissor lift is equipped with a hinged bridge(s), the bridge must overlap the trailer bed by a minimum of 4" (102mm) before use. Do not use the bridge if it is supported solely by the lifting chain.

Hinged lips may drop unexpectedly, keep people and objects clear of the area immediately under or near the lip.

If maintenance or service is required:

- *Only authorized service personnel shall provide maintenance / service on the lift.*
- *Follow approved lockout procedures.*
- *Do NOT work on or under the lift without properly engaging the lift's maintenance strut. Blue Giant recommends the use of a secondary means (service stand) of securing the scissor lift while performing repairs under the deck.*
- *The lift shall not be modified or altered without written approval from an authorized Blue Giant representative.*
- *Maintain records of repairs and preventive maintenance reports.*



Corporate 410 Admiral Blvd
Mississauga, ON, Canada L5T 2N6
t 905.457.3900 **f** 905.457.2313

USA 6350 Burnt Poplar Road
Greensboro, NC 27409
www.bluegiant.com